



# OPERATOR'S MANUAL

## TTJ-1000S Telescopic Transmission Jack



**JET EQUIPMENT & TOOLS, INC.**  
A WMH Company  
[www.jettools.com](http://www.jettools.com)

P.O. BOX 1349  
Auburn, WA 98071-1349  
e-mail [jet@jettools.com](mailto:jet@jettools.com)

253-351-6000  
Fax 253-939-8001  
**M-450080 8/99**

## Important Information

**1-YEAR  
LIMITED WARRANTY**

**JET offers a one-year limited  
warranty on this product**

### REPLACEMENT PARTS

Replacement parts for this tool are available directly from JET Equipment & Tools. To place an order, call 1-800-274-6848. Please have the following information ready:

1. Visa, MasterCard, or Discover Card number
2. Expiration date
3. Part number listed within this manual
4. Shipping address other than a Post Office box.

### REPLACEMENT PART WARRANTY

JET Equipment & Tools makes every effort to assure that parts meet high quality and durability standards and warrants to the original retail consumer/purchaser of our parts that each such part(s) to be free from defects in materials and workmanship for a period of thirty (30) days from the date of purchase.

### PROOF OF PURCHASE

Please retain your dated sales receipt as proof of purchase to validate the warranty period.

### LIMITED TOOL AND EQUIPMENT WARRANTY

JET makes every effort to assure that its products meet high quality and durability standards and warrants to the original retail consumer/purchaser of our products that each product be free from defects in materials and workmanship as follows: 1 YEAR LIMITED WARRANTY ON THIS JET PRODUCT. Warranty does not apply to defects due directly or indirectly to misuse, abuse, negligence or accidents, repairs or alterations outside our facilities or to a lack of maintenance. JET LIMITS ALL IMPLIED WARRANTIES TO THE PERIOD SPECIFIED ABOVE FROM THE DATE THE PRODUCT WAS PURCHASED AT RETAIL. EXCEPT AS STATED HEREIN, ANY IMPLIED WARRANTIES OR MERCHANTABILITY AND FITNESS ARE EXCLUDED. SOME STATES DO NOT ALLOW LIMITATIONS ON HOW LONG THE IMPLIED WARRANTY LASTS, SO THE ABOVE LIMITATION MAY NOT APPLY TO YOU. JET SHALL IN NO EVENT BE LIABLE FOR DEATH, INJURIES TO PERSONS OR PROPERTY OR FOR INCIDENTAL, CONTINGENT, SPECIAL OR CONSEQUENTIAL DAMAGES ARISING FROM THE USE OF OUR PRODUCTS. SOME STATES DO NOT ALLOW THE EXCLUSION OR LIMITATION OF INCIDENTAL OR CONSEQUENTIAL DAMAGES, SO THE ABOVE LIMITATION OR EXCLUSION MAY NOT APPLY TO YOU. To take advantage of this warranty, the product or part must be returned for examination, postage prepaid, to an authorized service station designated by our Auburn office. Proof of purchase date and an explanation of the complaint must accompany the merchandise. If our inspection discloses a defect, JET will either repair or replace the product or refund the purchase price, if we cannot readily and quickly provide a repair or replacement, if you are willing to accept such refund. JET will return repaired product or replacement at JET's expense, but if it is determined there is no defect, or that the defect resulted from causes not within the scope of JET's warranty, then the user must bear the cost of storing and returning the product. This warranty gives you specific legal rights, and you have other rights, which vary, from state to state.

**JET Equipment & Tools • P.O. Box 1349, Auburn, WA 98071-1349 • (253) 351-6000**

 **WARNING**

- Read and understand the entire Operators Manual before attempting assembly or operation.
- This jack is designed and intended for use by properly trained and experienced personnel only. If you are not familiar with the proper and safe operation of a jack, do not use until proper training and knowledge has been obtained.
- The vehicle must be properly supported and blocked before starting repairs.
- Use a transmission jack of the proper size and capacity to handle the anticipated load. This jack is rated for a maximum load of 1,000 lbs. Do not overload beyond the jack's rated capacity. Overloading may cause damage to, or failure of the jack.
- Keep hands, fingers, and arms away from moving parts of the jack at all times.
- Secure the load with the safety chain before lowering or moving the load.
- Lower the load slowly and avoid sudden starts or stops that may cause the load to shift.
- This jack is designed for use only on hard, level surfaces capable of sustaining the load. Use on other than hard, level surfaces can result in jack instability and possible loss of load.
- Do not use the transmission jack if under the influence of alcohol or drugs.
- This transmission jack is designed and intended for use by properly trained and experienced personnel only. If you are not familiar with the proper and safe operation of a transmission jack, do not use until proper training and knowledge has been obtained.
- The use of this jack is limited to the removal, installation, and transportation in the lowered position, of transmissions and differentials.
- Failure to comply with all of these warnings may cause loss of load, damage to the jack, and/or failure of the jack resulting in serious injury and/or property damage.

**Specifications:**

**TTJ-1000S**

Stock Number.....	450080
Capacity (lbs) .....	1,000
Minimum Height (in) .....	36-3/4
Maximum Height (in) .....	76-5/8
Sideways Adjustment.....	12° L&R
Forward and Backward Adjustment.....	46°/42°
Base Size (L x W/ in).....	34 x 36
Saddle Size (L x W/ in).....	14-3/8 x 16-1/2
Net Weight (lbs).....	148
Shipping Weight (lbs) .....	163

**Table of Contents**

**Page**

Warnings.....	3
Specifications .....	4
Table of Contents .....	4
Assembly.....	5
Before Use .....	5
Operation .....	5
Maintenance.....	5-6
Changing Oil.....	6
Lubrication.....	6
Troubleshooting.....	6
Parts List & Breakdown.....	7-9



The specifications in this manual are given as general information and are not binding. JET Equipment & Tools reserves the right to effect, at any time and without prior notice, changes or alterations to parts, fittings, and accessory equipment deemed necessary for any reason whatsoever.

## Assembly

1. Attach either one of the two base halves to the steel base of the hydraulic unit. Use two hex socket cap screws and washers provided to securely fasten base half to the base. Repeat for other side.
2. Place the saddle on the ram piston. Tighten the hex socket screw into the grooved portion of the piston, and firmly tighten the screw.

## Before Use

1. Inspect the jack before each use. Do not use if bent, or damaged in any way. Make sure castors move freely. Check and tighten any loose assemblies.
2. With the ram in its lowest position, remove the oil filler plug. This will help release any pressurized air trapped in the reservoir. The oil level should be right below the oil fill hole. If low, add Mobil DTE 13 hydraulic jack oil. Replace oil filler plug.
3. Before initial use turn the vent screw counterclockwise 2-3 turns. This action will allow air to vent in hydraulic pump. (self-bleeding pump)

## Operation

1. Move the jack into desired position.
2. Lock the castors.
3. Pump the foot pedal to raise the saddle.
4. Adjust the saddle angles to align with the shape of the transmission.
5. Adjust the jaws and fasten the chain to secure the transmission to the saddle.
6. Slowly, gently apply downward pressure to the lowering pedal. This will lower the saddle slowly.
7. Transport transmission or differential in lowered position only.

## Maintenance

The hydraulic cylinder assembly contains hydraulic fluid that must be kept at approximately 80% full at all times for proper operation. Use only high quality hydraulic jack oil, such as Mobil DTE 13. To check the level and to fill:

1. Lower the saddle completely.
2. Remove oil filler plug and make a visual inspection inside the oil filler plug hole. Oil should be level with the oil filler plug hole.
3. If oil is not level with oil filler plug hole, fill with Mobile DTE 13.
4. Replace the oil filler plug.

### Changing the Oil

Always change the oil once a year, especially if jack is used daily.

1. With the saddle, ram and piston in its lowest position remove the oil filler plug.
2. Lay the jack on its side and drain the fluid into a suitable container. Dispose of oil according to local regulations.
3. Set jack in upright position.
4. Fill with a good quality hydraulic jack oil to level position inside filler hole.

### Lubrication

Lubricate the shaft threads of the angle screw assembly and the table screw assembly with #2 tube grease when necessary.

### Troubleshooting

Symptom	Possible Causes	Corrective Action
Jack will not lift the load	Overload condition	Remedy overload condition
Jack slowly lowers after lift	Overload condition Hydraulic unit malfunction	Remedy overload condition Contact Tech Service
Jack will not lower after unloading	Reservoir overfilled Linkages binding	Drain jack oil to proper level Clean and lubricate moving parts
Poor lifting performance	Jack oil level low Air trapped in system	Add jack oil With jack in its lowest position remove the oil filler plug to let air escape. Reinstall plug
Will not lift to full extension	Jack oil level low	Add jack oil

## Parts List for JET TTJ-1000S Telescopic Transmission Jack

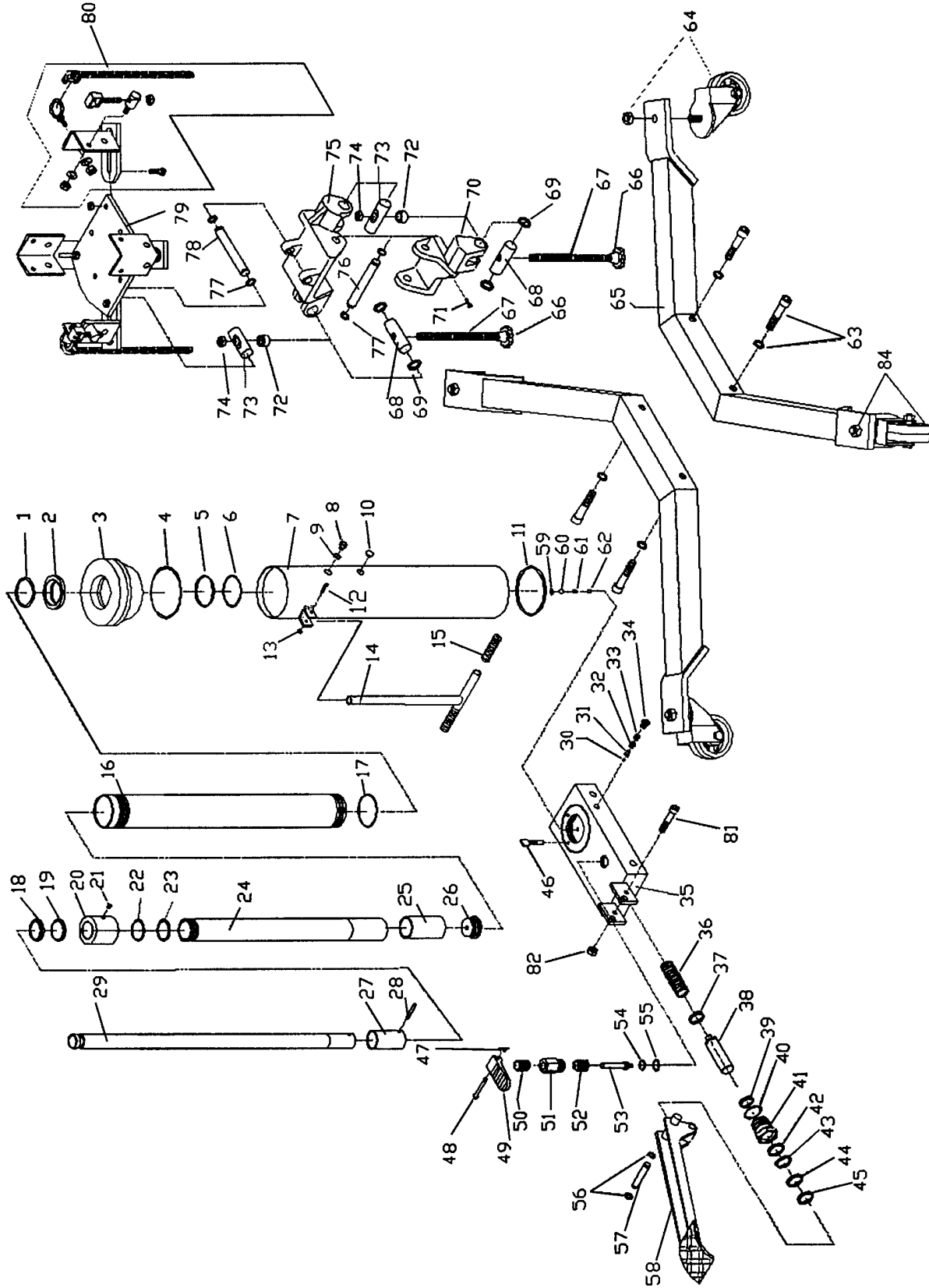
Index No.	Part No.	Description	Size	Qty.
1	RE: index # 83	O-ring *		1
2	RE: index # 83	U-cup *		1
3	G36-6-1801-106	Top Nut		1
4	RE: index # 83	O-ring *		1
5	RE: index # 83	O-ring *		1
6	RE: index # 83	Back-up Ring *		1
7	G36-3-1803-102	Reservoir Assy.		1
8	RE: index # 83	Screw *	5/16"-18UNCx5/8"	1
9	RE: index # 83	O-ring *		1
10	RE: index # 83	Filler Screw Assy. *		1
11	RE: index # 83	Seal *		1
12	TS-1490071	Bolt	M8x1.25x40	1
13	TS-1540061	Nut	M8x1.25	1
14	G36-3-2100-103	Handle Assy.		1
15	506-9-0264-106	Handle Grip		2
16	G36-6-1807-108	Cylinder		1
17	RE: index # 83	Washer *		1
18	RE: index # 83	Seal *		1
19	RE: index # 83	U-cup *		1
20	G36-6-1211-105	Ram Nut		1
21	609-1-0075-105	Pipe Plug		1
22	RE: index # 83	O-ring *		1
23	RE: index # 83	Back-up Ring *		1
24	G36-6-1212-107	Ram		1
25	G36-6-1213-109	Ram Guide Ring		1
26	G36-6-1214-101	Guide Ring		1
27	G36-6-1102-100	Piston Rod Guide Ring		1
28	601-4-0064-001	Spring Pin	6.4x38	1
29	G36-6-1101-108	Piston Rod		1
30	SB-3/16	Steel Ball	3/16"	1
31	501-9-0085-202	Spring Cap		1
32	512-2-0080-104	Safety Spring		1
33	426-6-1201-106	Safety Valve Screw		1
34	324-4-1900-208	Filler Screw Assy.		1
35	G36-3-1601-100	Base		1
36	512-2-0250-103	Compression Spring		1
37	G36-6-1216-105	Pump Piston Clip		1
38	G36-6-1401-100	Pump Piston		1
39	RE: index # 83	U-cup *		1
40	RE: index # 83	O-ring *		1
41	G36-6-1402-102	Pump Piston Guide Ring		1
42	RE: index # 83	O-ring *		1
43	RE: index # 83	Back-up Ring *		1
44	RE: index # 83	U-cup *		1
45	RE: index # 83	Back-up Ring *		1
46	RE: index # 83	Filter *		1
47	513-5-0016-018	Retaining Pin	1.6x21	1
48	566-4-0070-202	Pin	7x10x30	1

Index No.	Part No.	Description	Size	Qty.
49	G36-6-1809-102	Release Pedal		1
50	G36-6-1704-108	Screw Adjustment		1
51	G36-6-1703-106	Release Valve Lock Nut		1
52	512-2-0155-109	Compression Spring		1
53	G36-6-1701-102	Release Valve		1
54	RE: index # 83	O-ring *		1
55	RE: index # 83	Copper Gasket *		1
56	667-5-0127-005	Retaining Ring "C"		2
57	G36-6-1904-106	Spindle		1
58	G36-3-1900-100	Foot Pedal		1
59	666-5-0120-105	Retaining Ring "C"		1
60	SB-3/8	Steel Ball	3/8"	1
61	521-2-0062-020	Compressing Spring		1
62	SB-1/4	Steel Ball	1/4"	1
63	G36-3-0511-003	Bolt Set (4 pcs)		4
64	G36-3-5000-104	Wheel Chassis		2
65	G36-3-3300-106	Leg Assy.		2
66	G36-6-2301-101	Knob		2
67	G36-6-4206-107	Screw		2
68	G36-6-4204-103	Support Pin		2
69	667-5-0250-004	Retaining Ring "C"		4
70	G36-6-4301-101	Saddle Support (lower)		1
71	TS-0270071	Socket Set Screw	5/16"-18UNCx3/4	1
72	G36-3-5100-108	Thrust Bearing		2
73	G36-6-4205-105	Spindle		2
74	TS-1541041	Nylon Lock Nut	M10x1.5	2
75	G36-6-4302-103	Saddle Support (upper)		1
76	G36-6-4207-109	Spindle		1
77	667-5-0160-003	Retaining Ring "C"		4
78	G36-6-4208-101	Spindle		1
79	G36-3-4201-109	Saddle Holder		1
80	G36-3-0512-106	Accessory Kit (see breakdown for contents)		1
81	TS-0208141	Socket Head Cap Screw	5/16"-18UNCx3"	1
82	TS-0561021	Hex Nut	5/16"-18UNC	1
83	G36-3-9901-102	Pump Repair Kit (not shown includes index #1, 2, 4-6, 8-11, 17-19, 22, 23, 39, 40, 42-46, 54, 55)		1
84	G36-3-5001-106	Wheel w/Brake		2
85	TTJ1000S-LK	Label Kit (not shown)		1

\* included in G36-3-9901-102 Pump Repair Kit



Parts Breakdown





## TEST CERTIFICATE

COMMODITY	Telescopic Transmission Jack
MODEL	TTJ-1000S
SERIAL NO.	
CAPACITY	1/2 ton
TEST LOAD	ton
DATE OF INSPECTION	
JUDGEMENT	<b>PASSED</b>
INSPECTOR	

**JET EQUIPMENT & TOOLS, INC.**  
 A WMH Company  
 www.jettools.com

2415 West Valley Highway N  
 P.O. Box 1349  
 Auburn, WA 98071-1349

Fax: 800-274-6840  
 Phone: 253-351-6000  
 e-mail: jet@jettools.com